



DOHA
BRITISH
SCHOOL

RAWDAT
AL HAMAMA

PRIMARY NEWSLETTER

Week commencing 30th January

Message from Felice Kelly - Head of Primary

IMPORTANT MESSAGES:

Back to school - 30th January

Half-term holiday - 3rd
February

Dear parents,

We are excited to welcome all the children back to school on Sunday for face to face learning. The MOEHE have issued strict guidance for schools regarding COVID-19 procedures, which we will adhere to. As part of this, all children need to be tested within 48 hours of attending school each Sunday. Parents need to sign a declaration form to confirm their child is negative and can attend school. Please ensure this form is sent with your child each Sunday as the MOEHE will be monitoring this. Please find the link for the declaration form below.

<https://drive.google.com/file/d/1KoM3PFMLcZgN8NMUPIQTz9ekoQnoC28Y/view?usp=sharing>

I am looking forward to welcoming everyone back on Sunday,
Felice Kelly.



DOHA
BRITISH
SCHOOL

RAWDAT
AL HAMAMA

PRIMARY NEWSLETTER

Week commencing 30th January

ENGLISH:

EYFS:

Preschool:

We will be reading 'Little Red Hen', discovering where bread comes from and try to make our own by following a recipe.

Reception:

We will be reading 'The Little Red Hen'. We will be exploring farm animals and what happens on a farm.

KS1:

Year 1/2

We will be writing our very own Detective Narrative Story as our Hot Write for this half term.

KS2:

Year 3/4:

We will be sharing knowledge and our ideas to write a setting description as a class.

Year 5/6:

We will be writing our cliffhanger narrative from the perspective of Sherlock Holmes.



MATHS:

EYFS:

Preschool:

We will be exploring the number 6 and going on a journey, recalling prepositions.

Reception:

We will be representing and sorting 9 and 10.

KS1:

Year 1/2:

We will be consolidating all of our knowledge and skills from our addition and subtraction module in maths.

KS2:

Year 3/4:

We will begin our unit on measurement.

Year 5/6:

We will be looking at fraction, decimal and percentage equivalents and finding percentages of an amount.





DOHA
BRITISH
SCHOOL

RAWDAT
AL HAMAMA

PRIMARY NEWSLETTER

Week commencing 30th January

Word of the Week:

The ninja has chosen...

EYFS: wheat

Year 3/4: occasionally

Year 1/2: mysterious

Year 5/6: consolidated



ARABIC:

EYFS:

اللغة العربية: حرف الهاء التربية الإسلامية: سورة الكوثر.

Year 1/2:

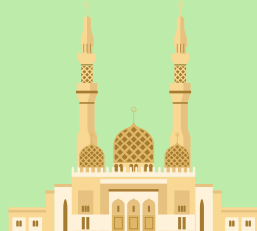
اللغة العربية: قراءة درس الكهرباء + خط التربية الإسلامية: سورة الكوثر

Year 3:

اللغة العربية: قصة الوحدة نزهة لن أنساها+ الاستماع صندوقنا المزين+ التحدث تنظيم رحلة مدرسية+ ضمائر الغائب المنفصلة ص 64 / التربية الإسلامية: كيفية الصلاة.

Year 4:

اللغة العربية: الكلمة والجمله+ النفي + الخط / التربية الإسلامية: بيعتا العقبة الأولى والثانية.



SPANISH:

EYFS:

We will be doing retrieval practice activities: *formas, frutas y colores.*

Year 1/2:

We will be doing retrieval practice activities: *números, me gusta y no me gusta.*

Year 3/4:

We will be doing retrieval practice activities: *preguntas clave y adjetivos for mood.*

Year 5/6:

We will be doing retrieval practice activities: *rutinas y las asignaturas*





DOHA
BRITISH
SCHOOL

RAWDAT
AL HAMAMA

PRIMARY NEWSLETTER

Week commencing 30th January

MUSIC:

EYFS:

Learning about the percussion family and performing different percussive sounds.

Year 1/2:

How to compose and perform using music notation.

Year 3/4:

Describing music used in shadow puppetry.

Year 5/6:

Listening and describing "The Planets" using the elements of music.



P.E:



Please join our online zooms according to your class timetable. The zoom codes will be posted to google classroom and dojo!

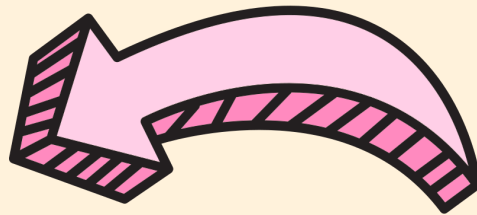


DOHA
BRITISH
SCHOOL

RAWDAT
AL HAMAMA

PRIMARY NEWSLETTER

Week commencing 30th January



Scan here to see
some of the fantastic
learning in Art during
our online learning
period.



Please use these websites for
extra reading at home:

<https://www.oxfordowl.co.uk/>

<https://www.getepic.com/>